



Hard Chess Puzzle # 0120

By

G Bud Games
<https://gbud.in>

January 28, 2022

Contents

Hard Chess puzzle # 0120 - Mate in 4 moves	4
Hard chess puzzle 0120	4
Solution to hard chess puzzle 0120	5
Solution 1	5
Right moves for the solution to the hard chess puzzle 0120	9
Explanation for the moves	9
Categories of hard chess puzzle 0120	10
hard chess puzzle 0120 chart	11
How to view the solution to hard chess puzzle 0120	13
How to get help for moves in the hard chess puzzle 0120	14
Play chess for free	15

List of Figures

1	Solve this hard chess puzzle 0120. Mate in 4 moves @ https://gbud.in/gfpz0k3	4
2	Solve this hard chess puzzle online with solution @ https://gbud.in/gfpz0k3	4
3	Initial board position of hard chess puzzle 0120	5
4	Qxe4+	6
5	dxe4	6
6	Bxe4+	7
7	Kg1	7
8	Bc5+	8
9	Ne3	8
10	Bxe3#	9
11	hard chess puzzle 120 chart 1	11
12	hard chess puzzle 120 chart 2	12
13	hard chess puzzle 120 chart 3	12
14	hard chess puzzle 120 chart 4	13
15	Click the solution button to view solutions @ https://gbud.in/gfpz0k3	13
16	Click the help button to get help on next move @ https://gbud.in/gfpz0k3	14
17	Solve more hard puzzles @ https://gbud.in/chshdpz	14
18	Solve other puzzles @ https://gbud.in/chsgppz	14
19	Play chess online for free. Solve puzzles and play with friends 15	15

20 Solve this puzzle online by scanning this QR code or go to
the link below 16

Hard Chess puzzle # 0120 - Mate in 4 moves

Solve this hard chess puzzle and improve your chess games through improvement of your chess strategies and chess tactics. This hard puzzle is a subset of [kids games](#).

Puzzle No : 0120

Difficulty level : hard

Description : Mate in 4 moves

Next Move : Black

Player level : Advanced

Short URL for puzzle : <https://gbud.in/gfpz0k3>

Hard chess puzzle 0120

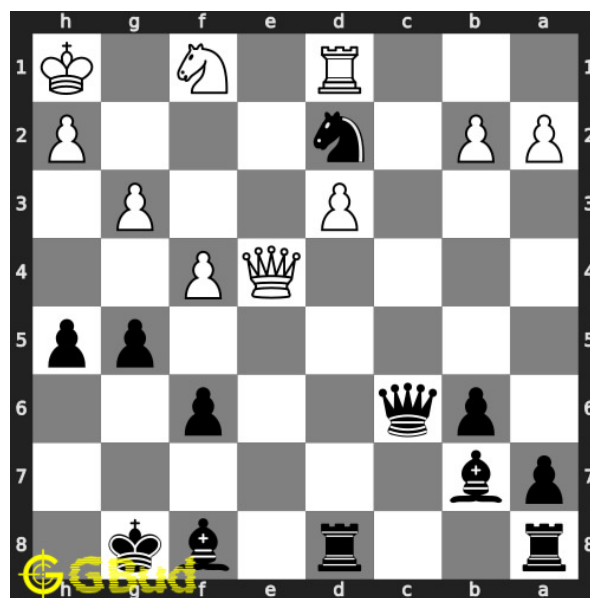


Figure 1: Solve this hard chess puzzle 0120. Mate in 4 moves @ <https://gbud.in/gfpz0k3>



Figure 2: Solve this hard chess puzzle online with solution @ <https://gbud.in/gfpz0k3>

Dont forget to check out [chess puzzles](#), [easy chess puzzles](#), [medium chess puzzles](#), [hard chess puzzles](#) and [chess puzzles collections](#) .

Solution to hard chess puzzle 0120

At this puzzle, next [move](#) is by [Black](#). The objective of the puzzle is to mate in 4 moves.

See the interactive solution at the [puzzle page](#)

Solution 1

Initial board position This is the initial board position of hard chess puzzle 0120.

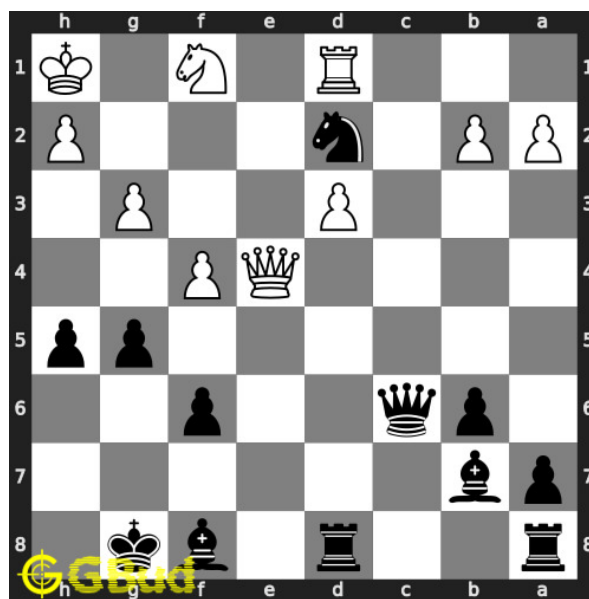


Figure 3: Initial board position of hard chess puzzle 0120

Move 1 Move by black

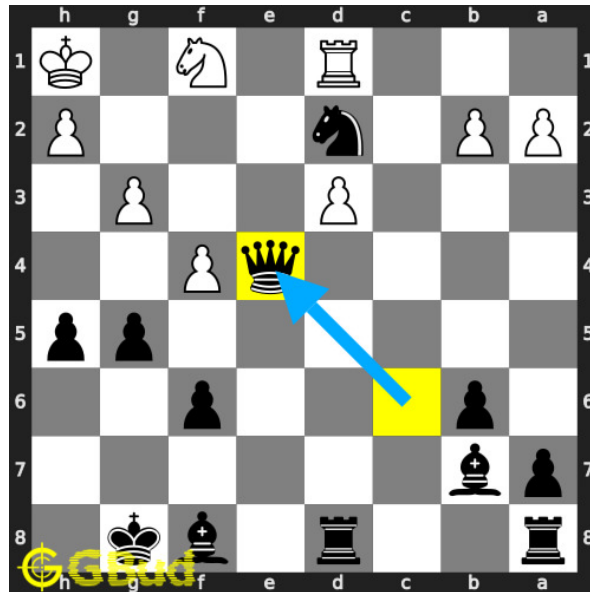


Figure 4: Qxe4+

your **queen sacrifices** itself to open the diagonal for your **bishop** in **battery** formation.

Move 2 Move by white

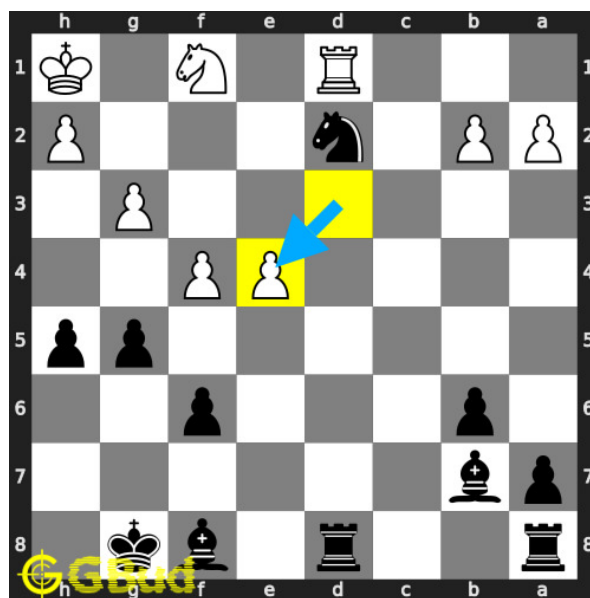


Figure 5: dxe4

opponent's **pawn captures** your **queen**

Move 3 Move by black

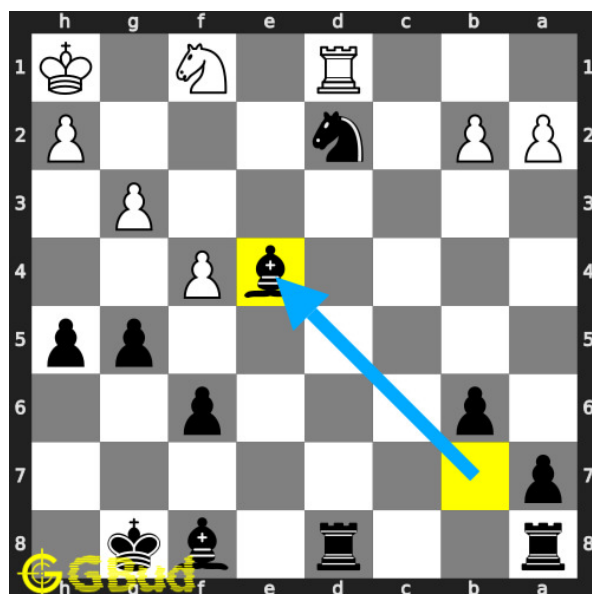


Figure 6: Bxe4+

your **bishop captures** opponents **pawn** and gives **check**.

Move 4 Move by white

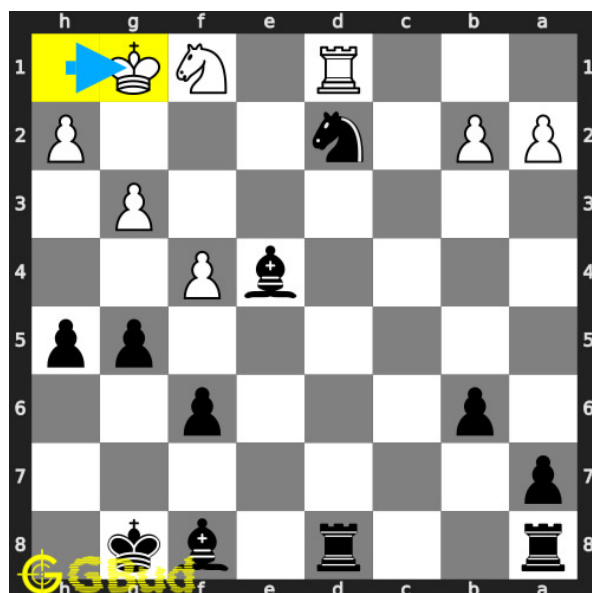


Figure 7: Kg1

opponent's **king** escapes from the **check** threat by moving to **g1**.

Move 5 Move by black

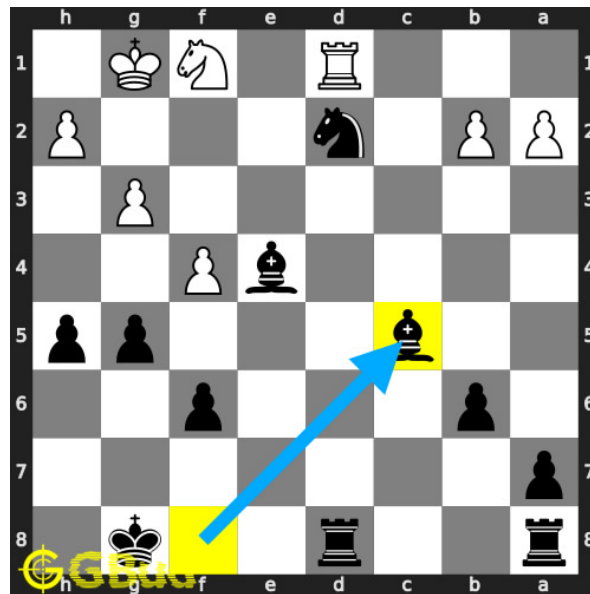


Figure 8: Bc5+

your next **bishop** gives the **check**.

Move 6 Move by white

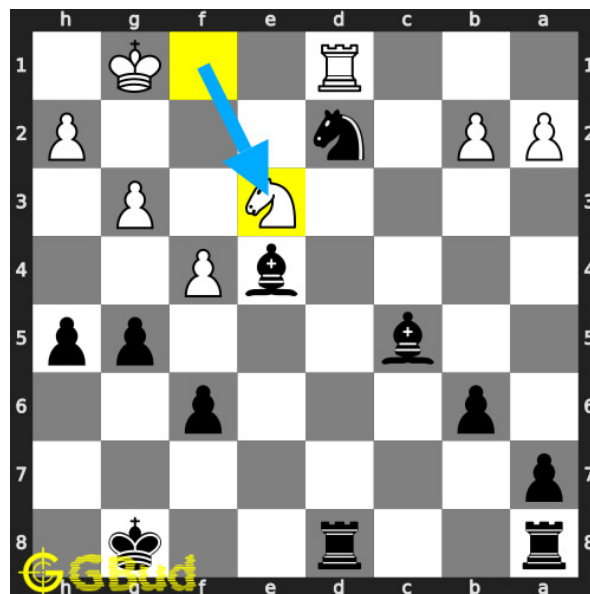


Figure 9: Ne3

opponent's **knight** blocks the **check**.

Move 7 Move by black

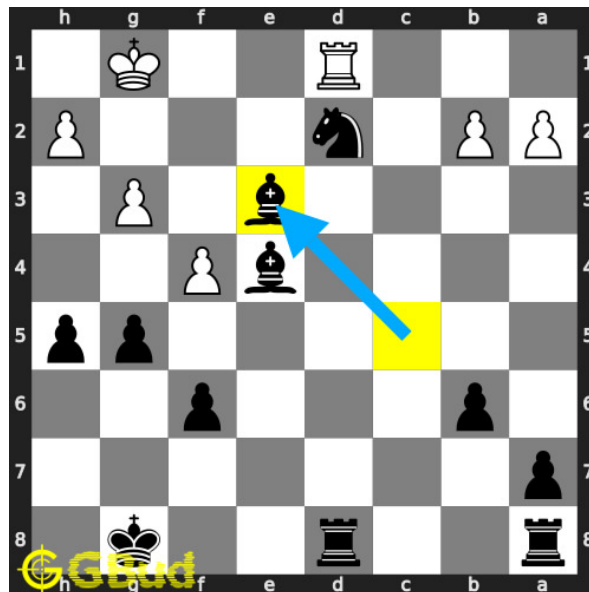


Figure 10: Bxe3#

your **bishop captures** opponent's **knight** and **checkmate**. opponent's **king** can't come to **f1** as it is attacked by your **knight**. this is similar to **double bishop mate**. this is how you can **mate** in 4 moves.

Right moves for the solution to the hard chess puzzle 0120

Based on the objective of the puzzle, you have to make the right moves. Following are the right moves

1. Qxe4+, Bxe4+, Bc5+, Bxe3#

Explanation for the moves

1. Qxe4+ - Your queen sacrifices itself to open the diagonal for your bishop in battery formation.
2. dx4 - Opponent's pawn captures your queen
3. Bxe4+ - Your bishop captures opponents pawn and gives check.
4. Kg1 - Opponent's king escapes from the check threat by moving to g1.
5. Bc5+ - Your next bishop gives the check.
6. Ne3 - Opponent's knight blocks the check.
7. Bxe3# - Your bishop captures opponent's knight and checkmate. Opponent's king can't come to f1 as it is attacked by your knight. This is similar to double bishop mate. This is how you can mate in 4 moves.

8. For right move - You have successfully had a mate in 4 moves. Good strategy
9. For wrong move - You could have sacrificed queen for a checkmate. Try again

Categories of hard chess puzzle 0120

This hard chess puzzle falls in these categories.

1. [Hard chess puzzles](#)
2. [Sacrifice puzzles in chess](#)
3. [Endgame puzzles in chess](#)
4. [Strategy puzzles in chess](#)
5. [Mate pattern puzzles in chess](#)
6. [Mate in 4 puzzles in chess](#)
7. [Queen puzzles in chess](#)
8. [Bishop puzzles in chess](#)

hard chess puzzle 0120 chart



Figure 11: hard chess puzzle 120 chart 1



Figure 12: hard chess puzzle 120 chart 2



Figure 13: hard chess puzzle 120 chart 3

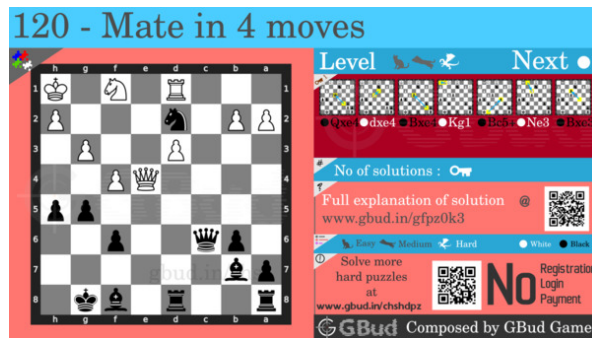


Figure 14: hard chess puzzle 120 chart 4

How to view the solution to hard chess puzzle 0120

To view the [solution to this puzzle](#), follow the steps given below

1. Go to the [puzzle page](#)
2. Click the solution button (Key as shown [below](#)) to view the solution



Figure 15: Click the solution button to view solutions @ <https://gbud.in/gfpz0k3>

How to get help for moves in the hard chess puzzle 0120

To get help or the possible next moves in the puzzle, , follow the steps given below

1. Go to the [puzzle page](#)
2. Click the help button (exclamation mark as shown [below](#)) to get help or suggestion on next possible [move](#)



Figure 16: Click the help button to get help on next move @ <https://gbud.in/gfpz0k3>



Figure 17: Solve more hard puzzles @ <https://gbud.in/chshdpz>



Figure 18: Solve other puzzles @ <https://gbud.in/chsgppz>

Play chess for free

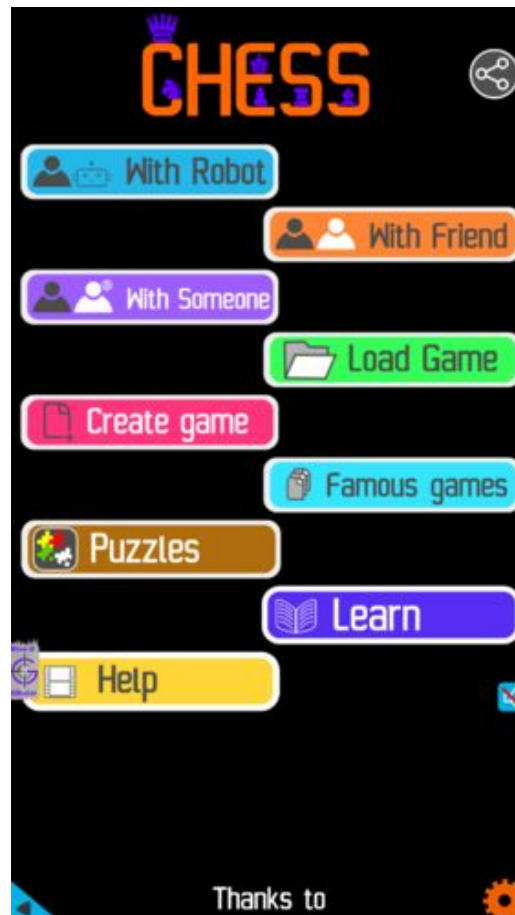


Figure 19: Play chess online for free. Solve puzzles and play with friends

Play chess for free at <https://gbud.in/chs>

We present you a platform to play chess online with friends for free. No need to install any app. You can play chess for free without registration or login.

Simple. You can do several chess related activities.

1. solve chess puzzles
2. learn about chess
3. play chess with computer
4. play chess with friend
5. create your own chess games

6. [fen viewer](#)
7. [fen editor](#)
8. [fen generator](#)
9. [pgn viewer](#)
10. [chess board editor](#)
11. [view famous chess games.](#)



Figure 20: Solve this puzzle online by scanning this QR code or go to the link below

<https://gbud.in/gfpz0k3>

Read the latest article on Hard Chess puzzle # 0120 - Mate in 4 moves by scanning this QR code or click the link

Previous article : « [Hard Chess puzzle # 0119 - Mate in 3 moves](#)

Next article : [Hard chess puzzles](#) »

[Back to top](#)

[Contact Us](#)